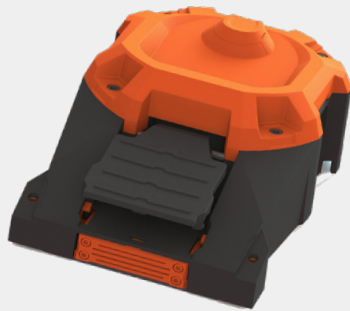
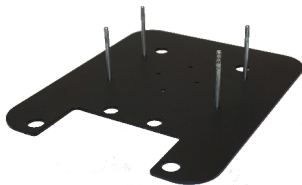


For our 6256 Heavy Duty Footswitch & Potentiometer series we offer a great range of adaptable accessories.



- ▶ **Unique functional design aesthetic**
- ▶ **Infinite multiplication of footswitches due to original modular design**
- ▶ **Base plate for additional stability**
- ▶ **Seal kit to increase IP rating to IP67**
- ▶ **Base link kit to create multipedal models**
- ▶ **2-,4-,6- and 10 core cable kits**

**Images of Accessories**



6050-5500-0154 Base plate



6050-5500-0156 Multipedal base link kit



6050-5500-0138 IP67 sealing kit for single & double



6050-5500-0141 IP67 sealing kit for triple



6050-5500-0142 IP67 sealing kit for quad

6050-5500-0139



2M of 2 Core Cable

6050-5500-0140



2M of 4 Core Cable

6050-5500-0143



2M of 6 Core Cable

6050-5500-0144



2M of 10 Core Cable



Part number	Description
6050-5500-0154	Base plate + screws (steel, black powder coated)
6050-5500-0138	IP67 sealing kit for 6256 single + double (UL)
6050-5500-0139	2-Core Cable Kit for 6256 Heavy duty, 2 m
6050-5500-0140	4-Core Cable Kit for 6256 Heavy duty, 2 m
6050-5500-0141	IP67 sealing kit for 6256 triple (UL)
6050-5500-0142	IP67 sealing kit for 6256 quad (UL)
6050-5500-0143	6-Core Cable Kit for 6256, used on double, triple or quad, 2 m
6050-5500-0144	10-Core Cable Kit for 6256, used on double, triple or quad, 2m
6050-5500-0156	Multipedal base link kit